



— 4/8/16CH H264 DVR —



USER GUIDE

Blackberry Mobile Viewer Installation And Operation

Unit 3, 3-5 Gilda Crt
Mulgrave VIC 3170
T: 1300 688 788

www.omnivision.net.au

info@omnivision.net.au

Information contained in this document is subject to change without notice.
Copyright © 2010 Omnivision Pty Ltd

TABLE OF CONTENTS

MOBILE APPLICATION INSTALLATION AND OPERATION FOR BLACKBERRY SYSTEM	3
1.1 SOFTWARE INSTALLATION.....	3
1.2 MOBILE SOFTWARE OPERATION.....	5
1.2.1 Adding new DVR connection.....	6
1.2.2 Log in onto the DVR	6
1.2.3 Modify the Login Information of DVR.....	8
1.2.4 Delete Existing DVR Record (Connection Information).....	8
1.3 LIVE IMAGE OPERATION	9
1.3.1 Live Image Display.....	9
1.3.2 Image size	9
1.3.3 Image Rotation.....	10
1.3.4 Alarm	10

Mobile Application Installation and Operation for Blackberry System

System requirements :

Mobile Device operation platform : Blackberry 9000

Mobile device needs to have an active data connection such as Blackberry data pack or GPRS / 3G / Wi-Fi... etc.

1.1 Software installation

Follow the following instructions to install the mobile application in your Blackberry Device.

Step 1: Visit Blackberry official website

<http://na.blackberry.com/eng/services/desktop/> www.blackberry.com.

Download the latest version of Blackberry Desktop Manager and install it in your PC

Step 2: Connect Blackberry USB transmission cable to Blackberry and PC. Activate Blackberry Desktop Manager on PC and it will automatically connect to Blackberry momentarily.



Step 3 : Execute "Application Loader"



Step 4: Execute "Add/Remove Applications"



Step 5: Copy "codname.alx" and "codname.cod" which can be found on the User Manual CD (packed with the DVR) to the PC.

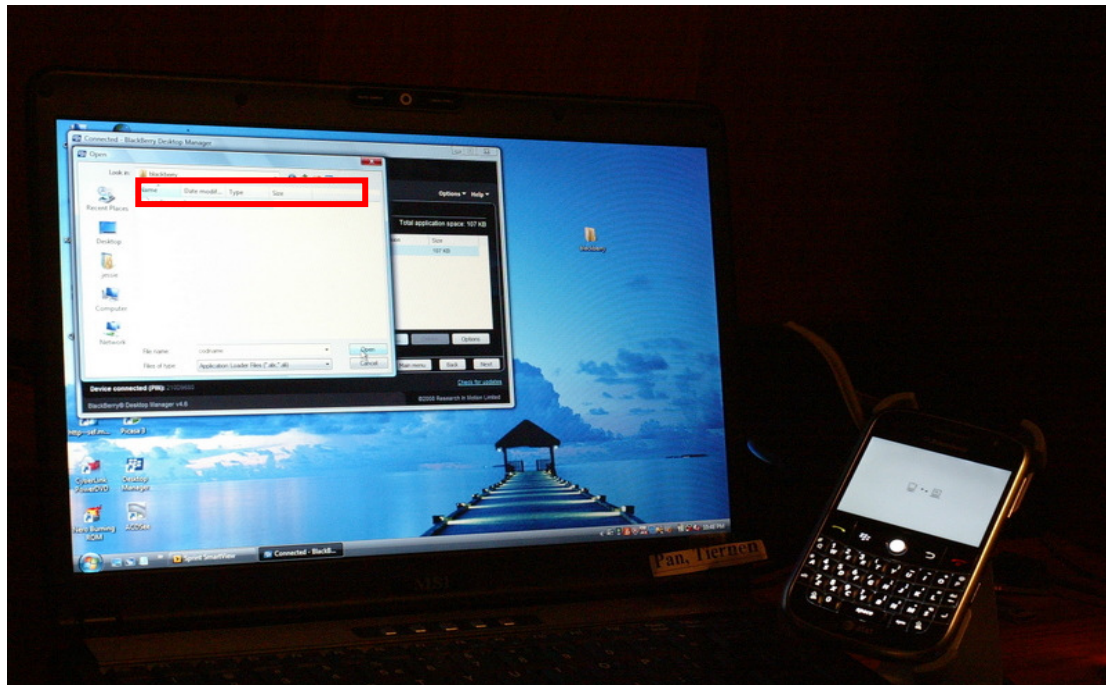


codname.alx
ALX 檔案
1 KB



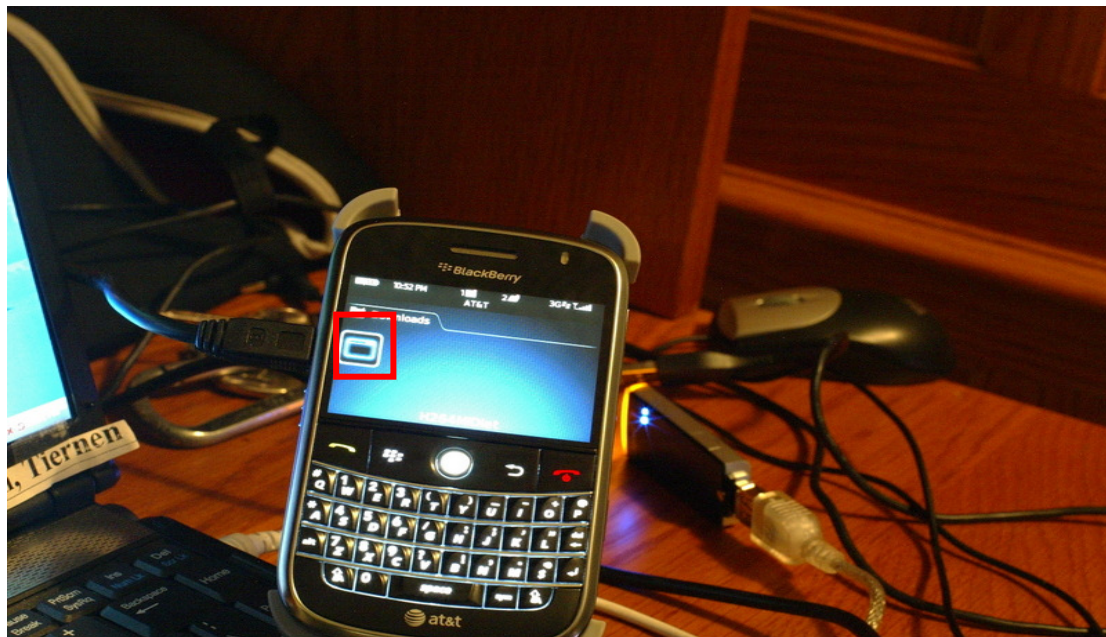
codname.cod
COD 檔案
108 KB

Step 6: Using the Blackberry Desktop Manager go to the location where the “codname.alx” is stored and select the file to execute mobile application installer and install the mobile application on your Blackberry device.



1.2 Mobile Software operation

After the software is installed completely, go to the “Download” menu in the mobile device and execute program, “H.264Midlet”



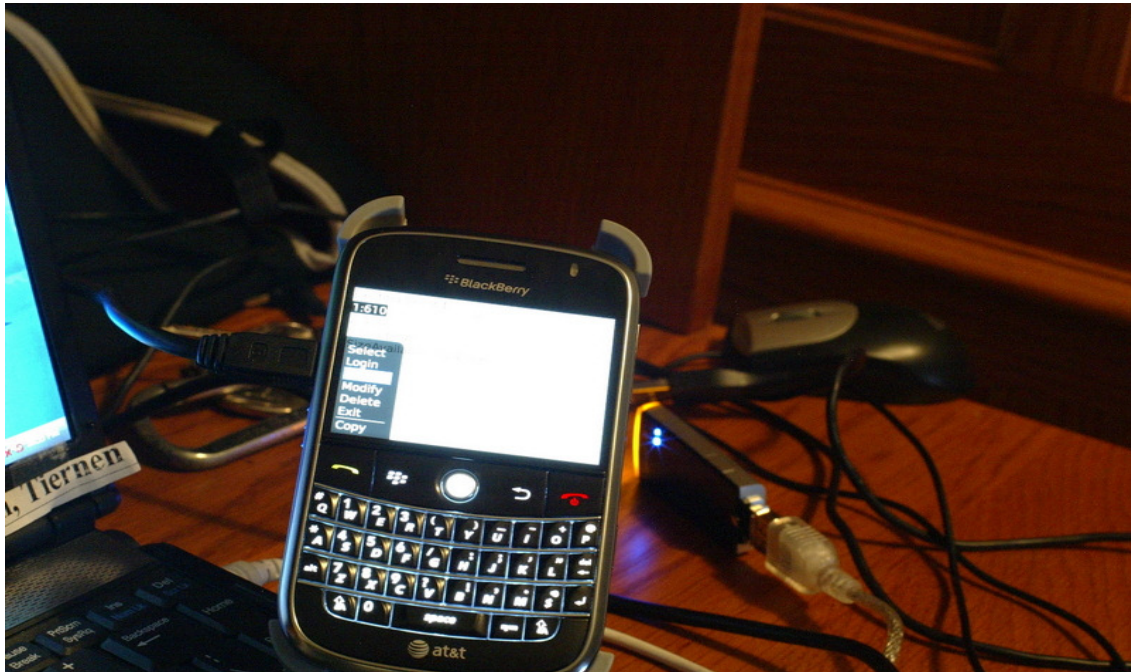
1.2.1 Adding new DVR connection

In order to connect to a DVR, the DVR information needs to be loaded on to the mobile device. Select "option" → "Add", and then enter the information required ("DVR IP", "port", "user name" and "password"). Press "ok" to save.



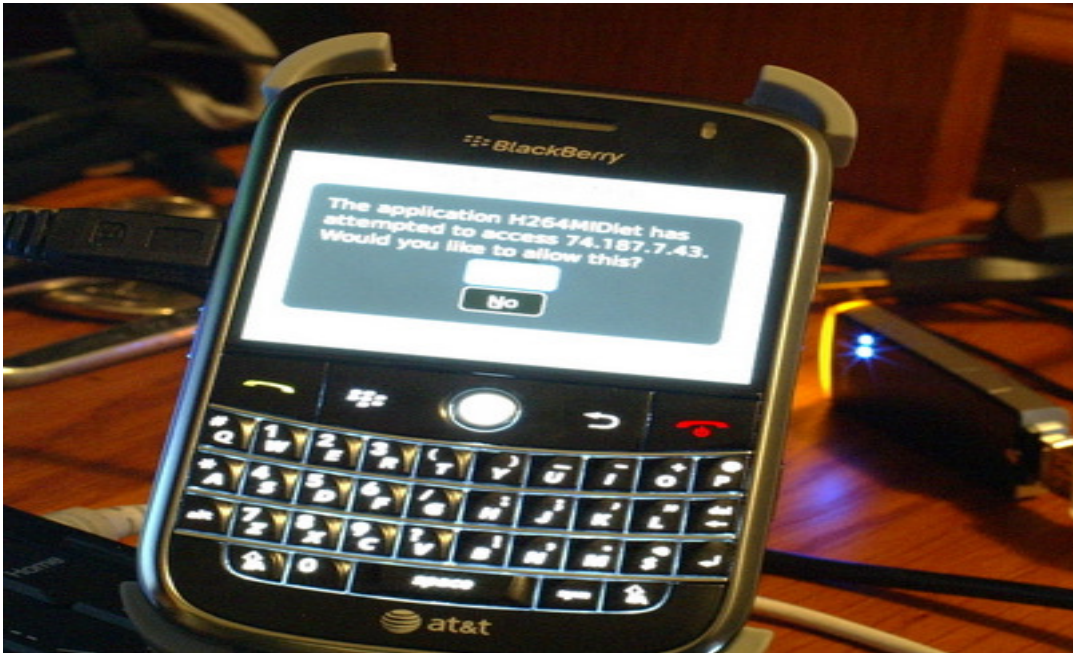
1.2.2 Log in onto the DVR

Multiple DVR information can be saved with the software, therefore, please choose the DVR which you want to connect to then Press "Option" → "Login" to log in to the DVR for live monitoring.



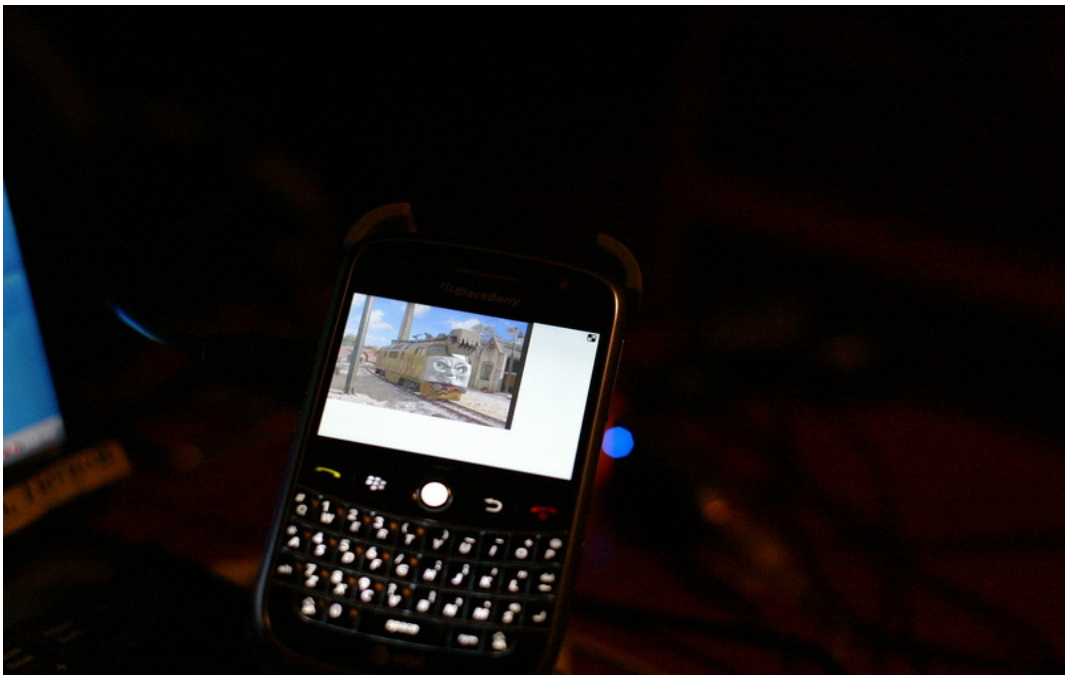
Before connecting to the DVR, there might be a packet download confirmation message which

appears on some mobile devices. Press “Yes.” (The data usage may incur a fee which will depend on your mobile service provider.)



Connecting time depends on the Internet transmission environment.

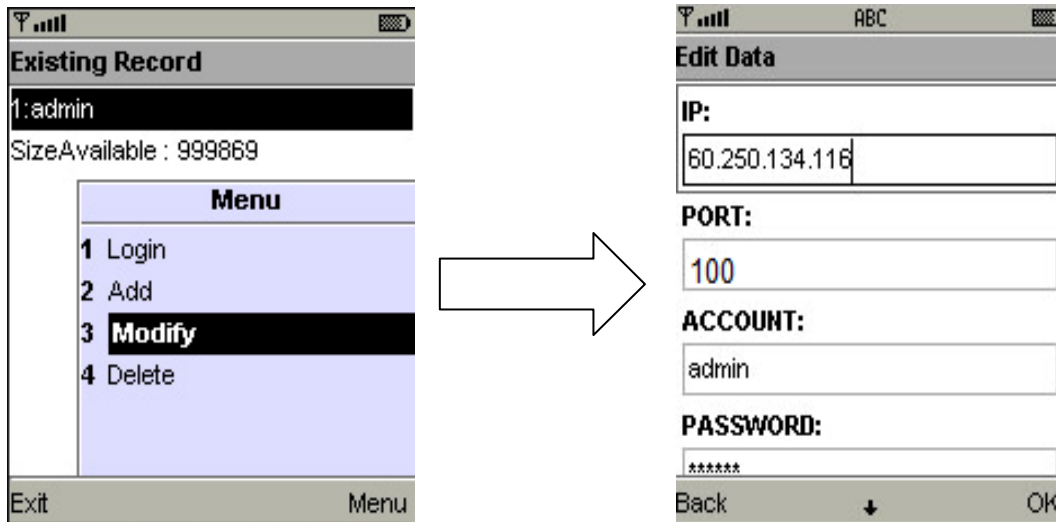
If the connection is successful DVR image appears.



Note : If the recording function is not turned on in the DVR, that channel will not be available for live monitoring.

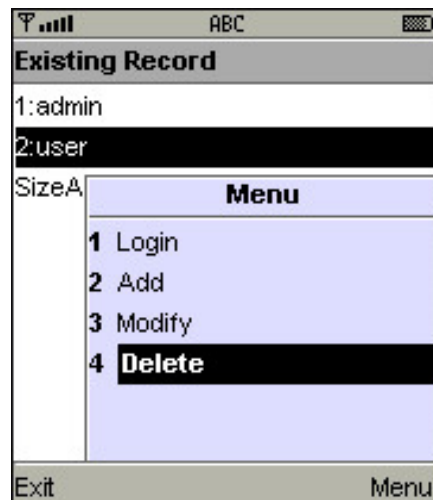
1.2.3 Modify the Login Information of DVR

If log-in information for a given system wished to be modified, please select that DVR. Enter "Option" → "Modify" for editing the existing data. Press "OK" when it's finished.



1.2.4 Delete Existing DVR Record (Connection Information)

If connection information for a DVR is no longer needed, please select the DVR. Press "Option" → "Delete" to delete the DVR connection information.



1.3 Live Image Operation

After successfully connecting to a DVR a live camera feed will be displayed on the screen. You can change channel displayed, perform image quality adjustments; receive alarms using the mobile application.

1.3.1 Live Image Display

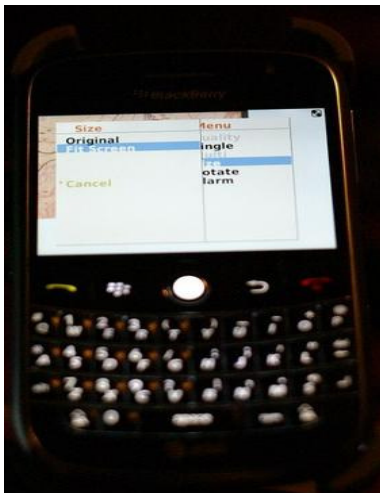
The displayed live feed can be changed by selecting “Single” then selecting the channel which needs to be viewed.



Note: If recording function is turned off for any channel from the DVR, that channel will not be available for live monitoring.

1.3.2 Image size

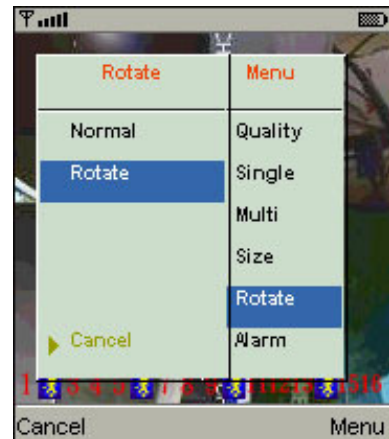
Due to the varying size of mobile device screens, this software offers two different methods for image display. Press “Size” in menu, and then there will be options, “Original” and “Fit Screen” available to choose from.



Option	Description
Original	Image appears as its original size.
Fit Screen	Image appears to be the most optimized size according to the screen.

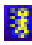
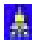

1.3.3 Image Rotation

There are two options for live image display. Display the image without any rotation, or rotate the image by 90 degrees. Press "Rotate" in menu and there will be options, "Normal" and "Rotate" available to choose from.



1.3.4 Alarm

Besides DVR live monitoring, you can receive system alarms through this software. If events like, Motion Detection, Sensor Detection, Video Loss ...etc. occurs, there will be alarm sound and alarm images appear on the status.

Icon	Description
	Motion Detection
	Sensor Detection
	Video Loss

Press "Alarm" in menu, there will be options, "Alarm OFF" and "Alarm ON" available to choose from.

