

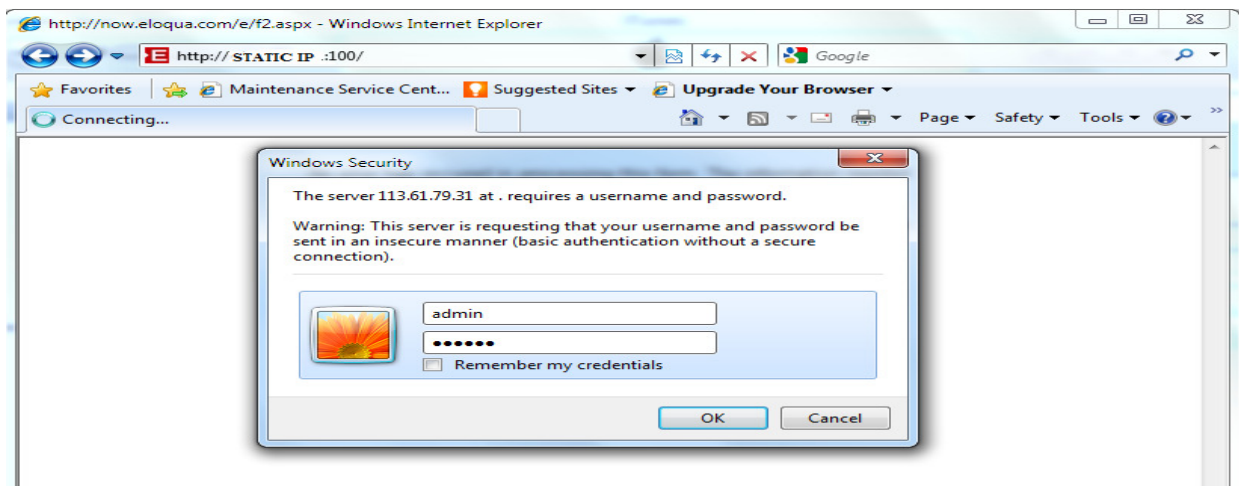
Remote Software Installation and Setup Using Web Browser - OVR

4100S/8100S/6100SN

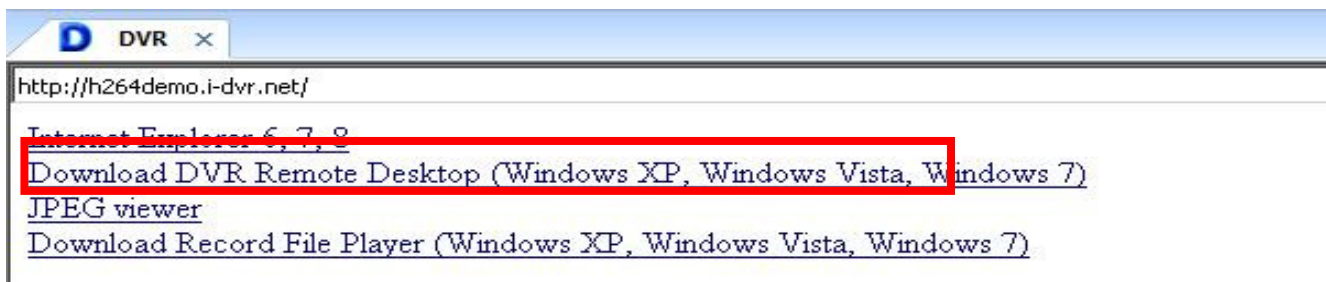
Using the web browser, log on to <http://StaticIPAddress:100>. The system authentication window will be displayed. Type the Username/Password to login to the system. The default settings are as below.

Username : Admin

Password : 123456



Click on 'Download DVR Remote Desktop' and Save the Remote Desktop software on to the local desktop.



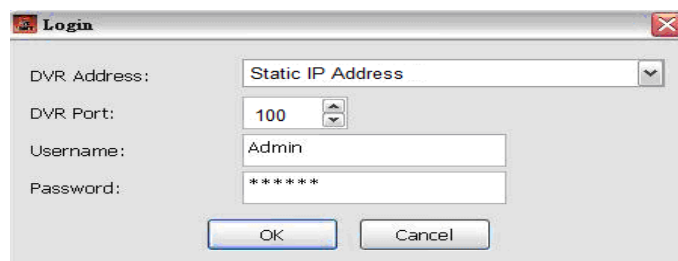
Double click on the DVR Remote Desktop software to run it and connect to the DVR system.

DVR address : Static IP Address

DVR Port : 100

Username : Admin

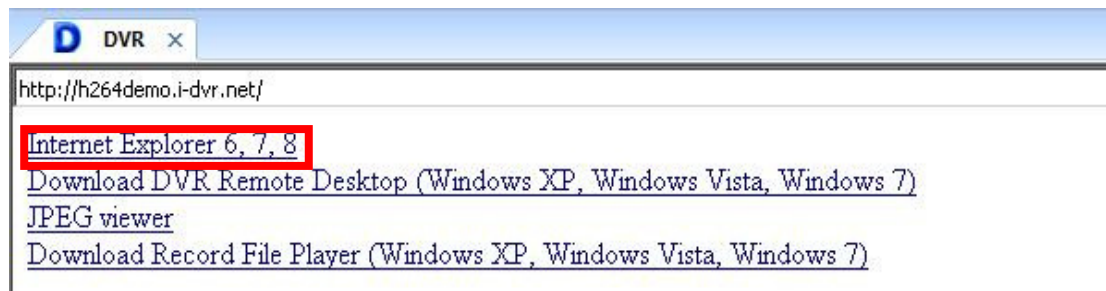
Password : 123456



Remote monitoring through Internet Explorer

Enter the IP address of DVR in IE browser followed by the port number of the DVR (e.g.: <http://StaticIPAddress:100>).

Click on “Internet Explorer 6, 7, and 8” to login to the system using IE.



*** The address appeared in this image is only for demonstration. The actual address varies on the setup of on-site DVR**

When accessing the system for the first time using IE a security warning will be displayed seeking authority to install an ActiveX component. Please refer to Appendix I for Remote Monitoring IE Active X Control Installation Instruction.



OMNIVISION - 1300 688 788
www.omnivision.net.au