

OMNIVISION DVR SEARCH GUIDE – OVR 4100S/8100S/6100SN

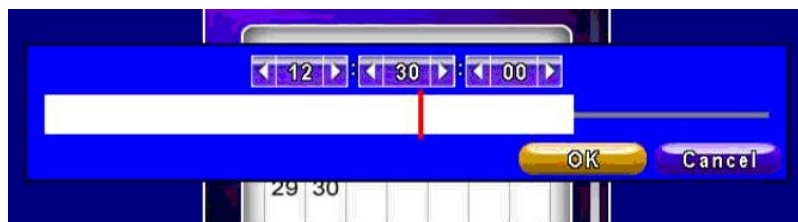
1. If using the mouse right click anywhere on the screen to get the main menu of the system. Then select “search setup” from the menu. Pressing the “T-SH” button from the front panel will take you the next screen as well.



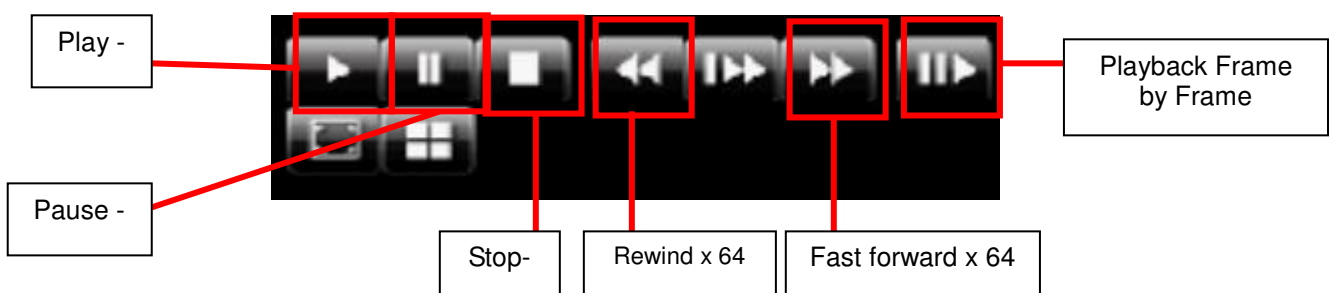
2. Select “Time Search” from the Search Setup screen.
3. Press “Enter” or left click on the desired date to playback (Note that dates for which the system has got stored data are marked with a red square).



4. From the time line which comes up select the start time of the recording you wish to playback. You can drag the red bar along side the time line or manually enter the time in the desired field/s.



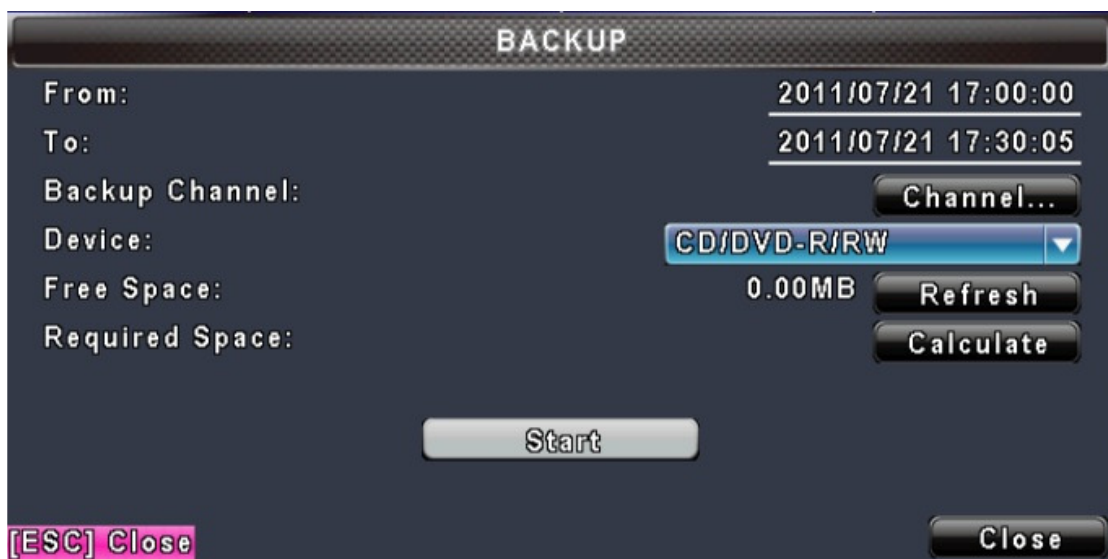
5. The system will start playing the recorded footage from the date and time you selected. You can use playback controls located on the bottom right hand side part of the screen or in the front panel to control (fast forward, rewind, pause, etc...) the playing back of recordings.



OMNIVISION DVR BACKUP GUIDE – OVR4100S/8100S/6100SN

Users can backup any segment of recorded data stored on the system. To do so, either a CD/DVD or a storage device like USB, must be connected to the DVR. Recorded data can also be backed up into a remote PC through our remote access software, “DVRemoteDesktop.exe” and be saved in your assigned path. The format of backup file is IRF (proprietary) which can be played by using “iFilePlaypack”, “DVRemoteDesktop.exe” or “CMS”.

1. If using the mouse right click anywhere on the screen to get the main menu of the system. Then select “Backup” from the menu. Pressing the “Backup” button from the front panel will take you the next screen as well.



2. Select the start time of backup file.
3. Select the end time of backup file.
4. Select the Channel/s (camera/s) which needs to be backed up.
5. Select USB, CD/DVD /RW or PC as the backup device.
6. Click “refresh” to refresh the available space in your backup device. The available space in your backup device will be displayed here (not available for PC backup).
7. Click “Calculate” to calculate the approximate size of the backup. **Be sure to calculate the size of the backup file BEFORE starting the backup and make sure the free space available is not RED.**
8. Click Start to Start the backup operation.

Note! Do not unplug the USB device or turn off the DVR during the backup process to avoid unrecoverable errors.

OMNIVISION - 1300 688 788

www.omnivision.net.au