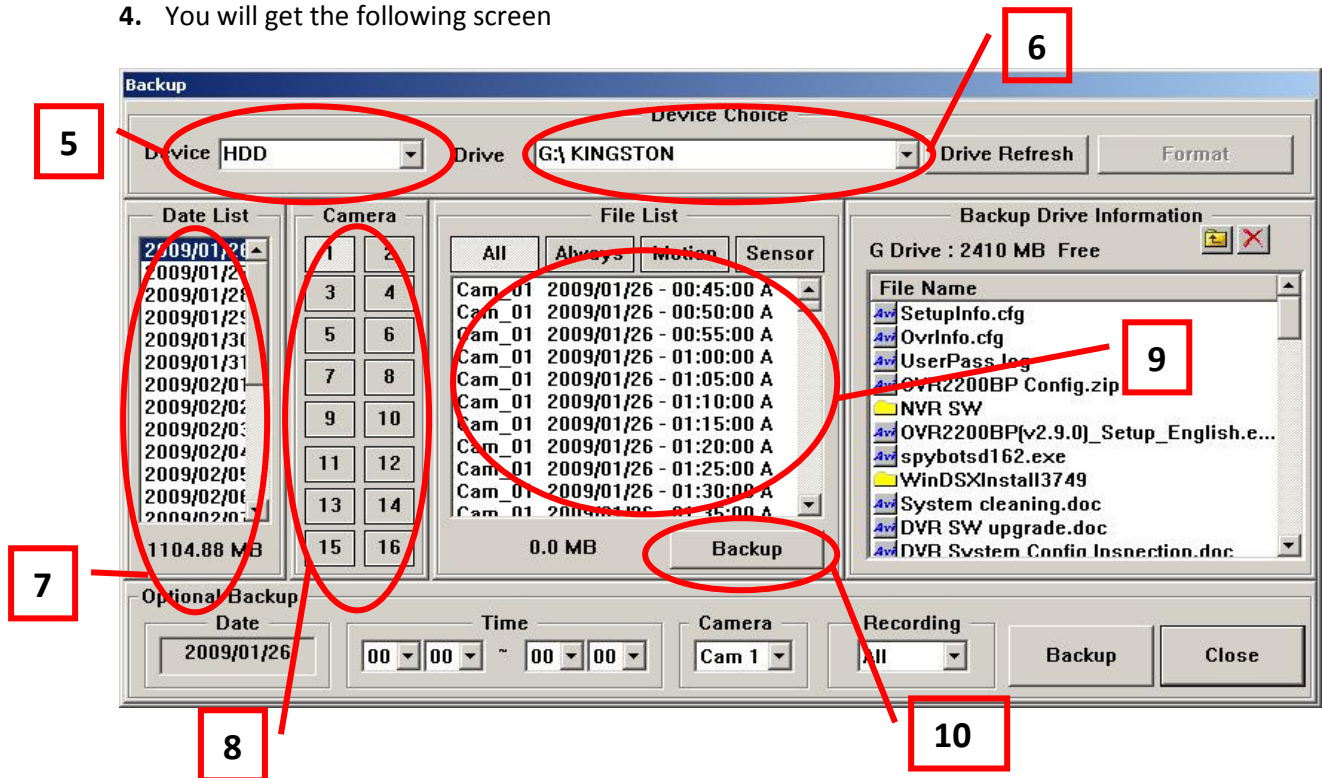


## OMNIVISION DVR BACKUP GUIDE – USB DRIVES

1. Plug your USB drive in to any USB port in the system



2. Click the “Backup” button located in the bottom-right corner
3. Enter password and click “OK”
4. You will get the following screen



5. Select “HDD” from the “Device” drop-down menu in the top-left corner
6. Go and select your USB drive from the “Drive” dropdown menu. If the USB drive is not listed click on the “Drive Refresh” button to refresh the drive list
7. Select the date you need to backup from the date list
8. Select the camera you need to backup from the camera list (for cameras 10-16 you need to use the Optional Backup section).
9. Select the file segments you need to backup from the file list (for optional backup section select the start and end times and the camera number from the list).
10. Click on the “Backup” button to backup the files you selected (for optional backup section you need to click on the backup button located on that section of the screen).



**1300 688 788**

**[www.omnivision.net.au](http://www.omnivision.net.au)**