


Search & Multi-Search functions

1. Click on the 'Search'  button in the bottom-right corner of the main screen.
2. Enter password and then click 'OK'
3. Using the calendar in the top-right corner, select the desired day.

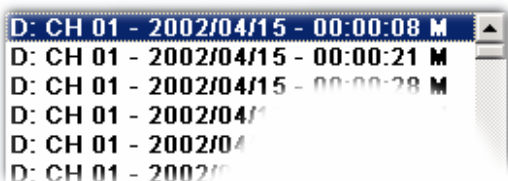


(Day MUST be blue)

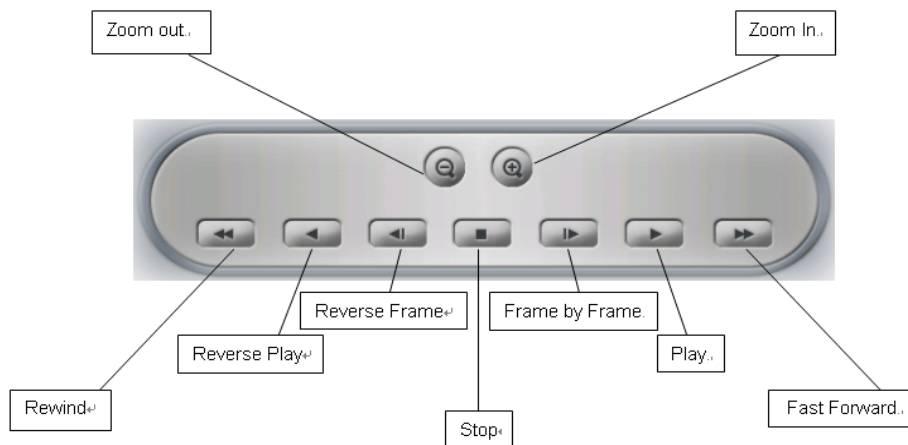
4. Just below the calendar, select the desired camera number



5. Now the times will be displayed in the box below the camera numbers.

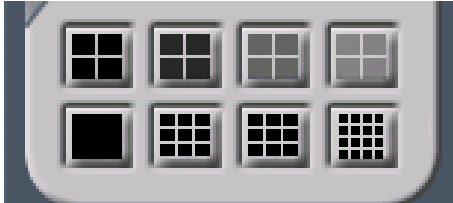


6. Double-click the desired time. This will load the footage in the viewer on the left.
7. Now using the controls on the bottom-left, select play, fast-forward, rewind, etc.





- To search multiple cameras at once, click the Multi-Search button
- Default view in Multi-Search is 4 cameras on 8-16 camera system – Use the buttons below to select the number of cameras to view at once

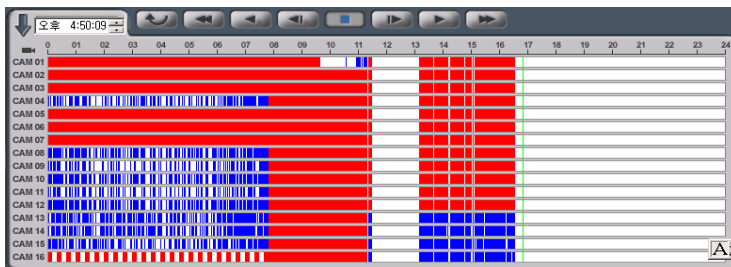


- Using the calendar in the bottom-left corner, select the desired day



(Day MUST be blue)

- To the right of the calendar, select a time on the timeline



- After selecting the desired time, the cameras will automatically load

- Then use the play controls above the timeline

- Click the Exit button to go back to the previous screen